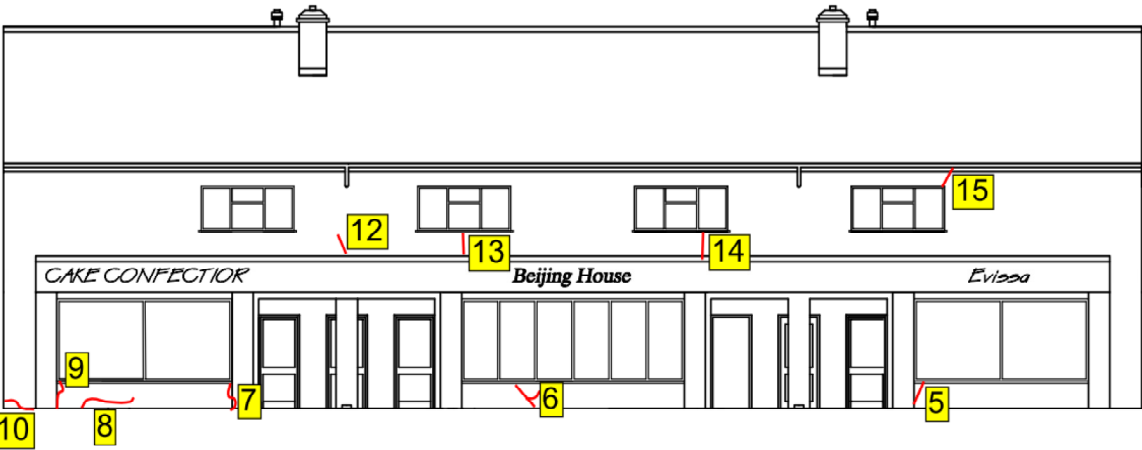
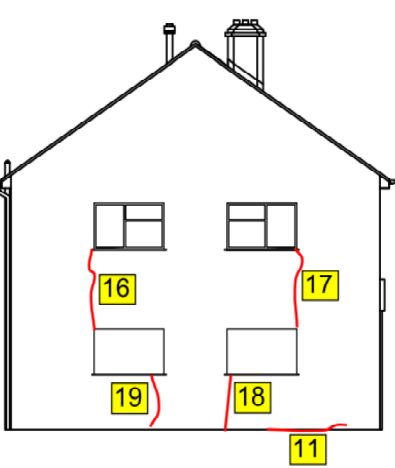




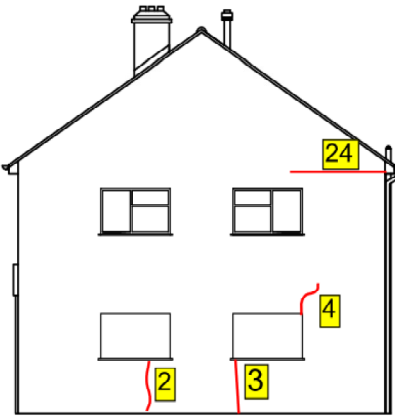
Rear Elevation - South West



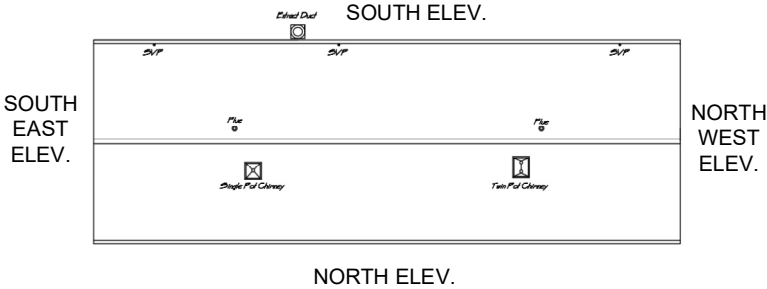
Front Elevation - North East



Side Elevation - South East



Side Elevation - North West



Remedial measure 1 - REM1

- 1. Helifix Helibar with Heli bond grout to be used to strengthen masonry panel in crack location.
- 2. Render to be hacked off in location of required Helibar slots.
- 3. Slots to be chased out between 25-35mm into existing masonry outer skin bedjoint and 500mm beyond the crack location on both sides and 300mm vertical ctrs.
- 4. Slots to be wetted down and primed with SBR or similar before filling slots with Helibond grout.
- 5. 6mm helibar to be placed in formed chase for full length of chase i.e. 500mm beyond the crack on both sides.
- 6. Actual crack to then be filled with Crackbond TE3 before re-rendering and painting remediation area.

Remedial measure 2 - REM2

- 1. Render to be hacked off locally to the crack to enable inspection of brick. If crack has progressed through the brick itself, use remedial measure 1 "REM1" above.
- 2. If crack is in render only and/or in the bed joints, utilise Helifix crackbond TE epoxy resin.
- 3. Once resin has cured re-render and paint remedial area.


Notes

- 1. Drawing not to scale.
- 2. Dust suppression to be utilised during cutting operation.
- 3. Proposed alternative bedjoint reinforcement to be approved before use.
- 4. Installer to be mindful of buried services within render when undertaking cutting operation.
- 5. Refer to SK06s for survey photos

Schedule of repairs

- 1. Diagonal crack - REM 1
- 2. Vertical crack - REM 2
- 3. Vertical crack - REM 2
- 4. Diagonal crack - REM 1
- 5. Vertical crack - REM 2
- 6. Diag/Vert crack - REM 2
- 7. Vertical crack - REM 2
- 8. Horizontal crack - REM 2
- 9. Vertical crack - REM 2
- 10. Horizontal gap/crack - REM 2
- 11. Horizontal gap - REM 2
- 12. Vertical crack - REM 2
- 13. Vertical crack - REM 2
- 14. Vertical crack - REM 2
- 15. Vertical crack - REM 2
- 16. Vertical crack - REM 2
- 17. Vertical crack - REM 2
- 18. Vertical crack - REM 2
- 19. Vertical crack - REM 2
- 20. Vertical crack - REM 2
- 21. Diagonal crack - REM 1
- 22. Vertical crack - REM 2
- 23. Vertical crack - REM 2
- 24. Horizontal gap - REM 2

Rev.	Date.	Details.	By.	Chk.	
Amendments					



**Bear Structures**  
Rugged by design  
35 Stow Park Circle Newport NP20 4HF  
United Kingdom info@bearstructures.com

Project:

37 THE WALK, NEW INN, PONTYPOOL

Title:

CRACK REMEDIATION

Drawn:	Checked:	Scale(s) at A1:		
AB	AB	NTS		
Date:	Job No.	Drawing No.	Revision:	Suitability:
25.07.25	P0560	SK05s	-	-
Drawing Status:				
FOR INFORMATION				